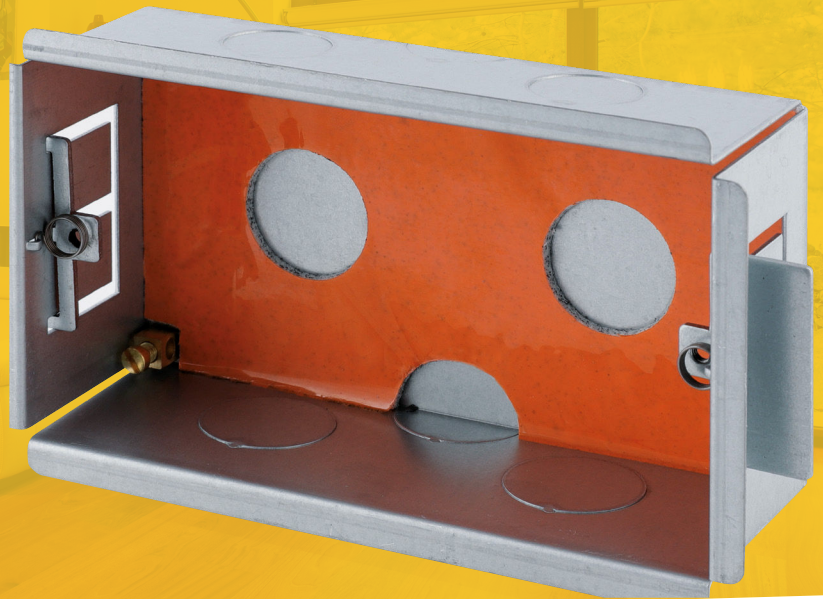
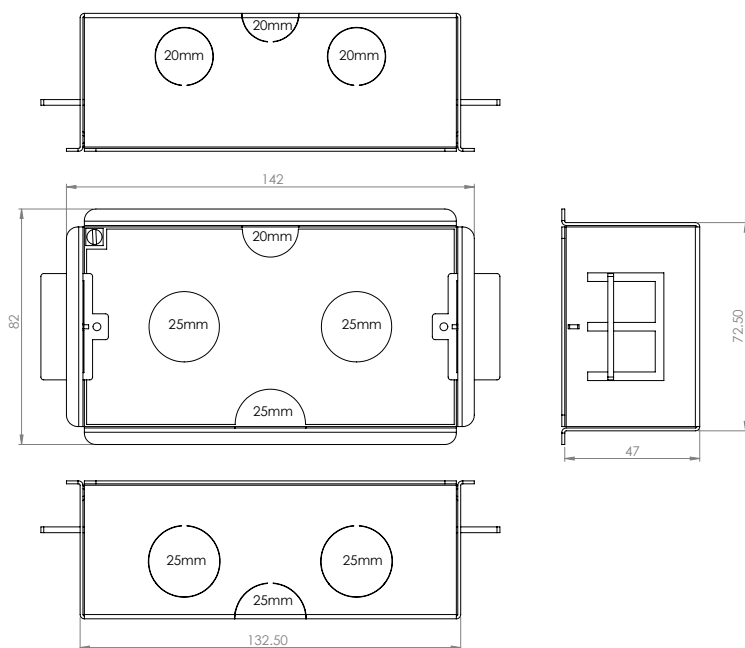


FR472

Dry Lining Fire Rated Box



Technical Drawing



Technical Specifications

Board Thickness	9-31mm
Cut Out Dimensions	73mm x 133mm
Lug Type	Adjustable
Material	Galvanised Steel
Mounting Depth	47mm
Number of Gangs	1
Dimensions	82x142x47mm (HxWxD)
Number of Knockouts	3 x 25mm, 3 x 20mm
Earth Terminal	Yes - Brass
Pad Insert	Intumescent Composite
Standards	BS4662 (where applicable) (Acoustic) ISO 10140-2:2010 (120min. Fire Resistance) EN 1363-1:2020, EN 1364-1:2015