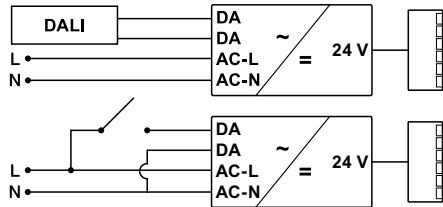


Loox5 compatible 12V dimmable Dali driver



- > Input voltage: 220-240 V; 50-60 Hz
- > Standby power consumption: 1 W
- > Number of output ports: 6 sockets
- > Output ports type: Loox5 2-pin 12 V
- > For screw fixing
- > Supplied with:
 - Driver with 2 m bare ended mains lead
 - 1x Loox5 6-way distributor
 - 1x DALI control lead with WAGO terminals 1 m
- > Order qty: 1 pc



For connecting dimmable lights (not for distributors with switching function or Connect Mesh, charging stations or sound systems)

5 12V

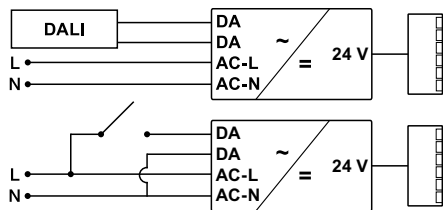


2 Year Warranty

Length x width x height	Output power	Cat. No.
360 x 30 x 20 mm	60W	830.18.058

Loox5 compatible 24V dimmable Dali driver

5



- > Input voltage: 220-240 V; 50-60 Hz
- > Standby power consumption: 1 W
- > Number of output ports: 6 sockets
- > Output ports type: Loox5 2-pin 24 V
- > For screw fixing
- > Supplied with:
 - Driver with 2 m bare ended mains lead
 - 1x Loox5 6-way distributor
 - 1x DALI control lead with WAGO terminals 1 m
- > Order qty: 1 pc



For connecting dimmable lights (not for distributors with switching function or Connect Mesh, charging stations or sound systems)

5 24V



2 Year Warranty

Length x width x height	Output power	Cat. No.
362 x 30 x 22 mm	60W	830.18.056
336 x 30 x 22 mm	100W	830.18.057

Lighting: Loox5 LED