

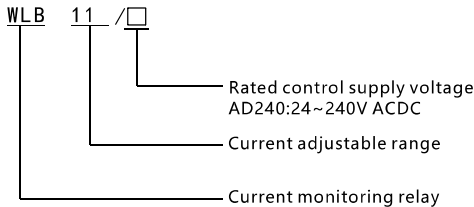


WLB110 Monitoring relay Datasheet

Function Features

- Modularization design 18mm width
- Sensitivity: 20A~110A, adjustable
- Comply with IEC60947-5-1

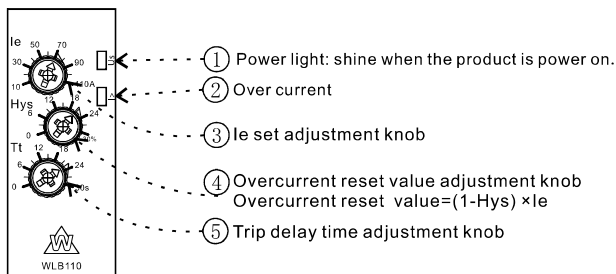
Model and Connotation



Main Technical Parameters

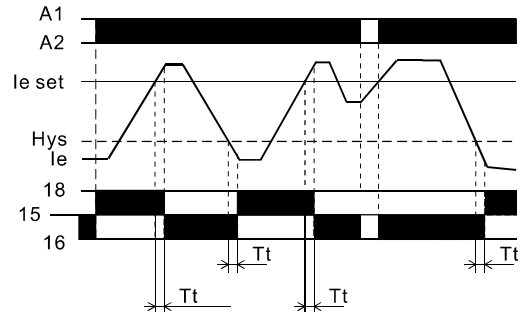
Model	WLB110
Rated control supply voltage	24~240V ACDC Allowable fluctuation range: $\pm 15\%$
Sensitivity adjustable range	20A...110A
Time delay adjustable range	0s...30s
Operation mode	2 Wire
Cable length	$\leq 1.5\text{m}$
Rated insulation voltage	AC415V
Utilisation category	AC-15
Contact capacity	1th:8A;Ue/Ie AC250V/8A,AC415V/4A
Electrical durability	100000 cycles
Mechanical durability	1000000 cycles
Pollution degree	3
Degrees of protection	IP20
Uimp	4kV
SCPD	NT00-10A
Power consumption	AC: $\leq 1\text{W}$ DC: $\leq 0.5\text{W}$
Storage temperature	-25...55°C, Up to 70°C in a short time (24h)
Permissible relative humidity	$\leq 50\%$ (40°C)(No condensation)
Operation temperature	-25...55°C
Height above sea level	$\leq 2000\text{m}$
Installation	Screw mounting or DIN rail mounting

Schematic Diagram of the Panel

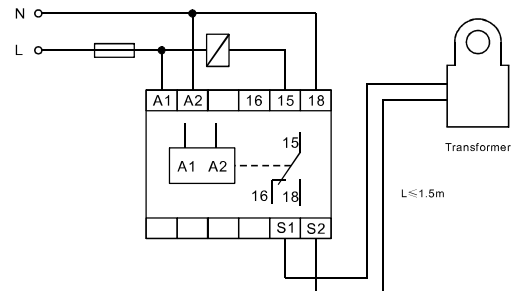


Operating Instructions

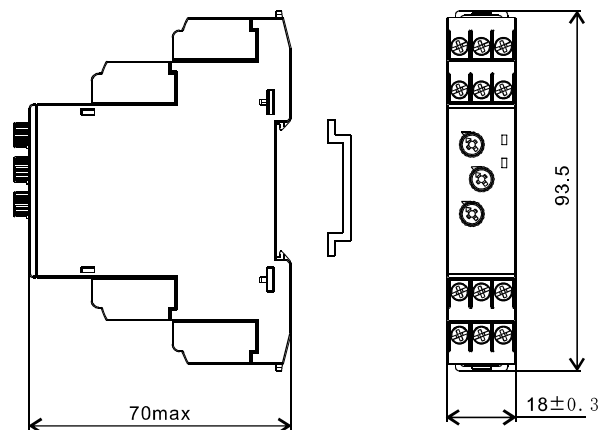
WLB110



Wiring Diagram



Overall Dimensions



Warning

1. This product shall be installed operated and maintained by professional personnel.
2. Whether or not the product functions normally user shall not dismantle or repair the said product without permission, and we shall not assume any responsibility for the accident as a result thereof.
3. Please refer to the wiring diagram in Operation Instructions when arranging wires.
4. Never place power input line in the same conduit with other wires with heavy current. Please use shielded wire if necessary so as not to bring about interference that may influence the normal operation of relay.
5. Do not use this product in areas with dust corrosive gases and with exposure to direct sunlight and rain.
6. Never use this product in medium with explosion hazard and with gases that may corrode metals and destroy the insulation, and do not use this product in a space with conductive dust.
7. Please store and use this product at rated supply voltage and stated temperature height above sea level and humidity
8. Failure to follow these instructions can result in death, serious injury, or equipment damage.
9. The warranty period of this product shall be 18 months under normal use.