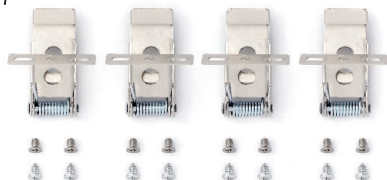


RECESS CLIP

91237



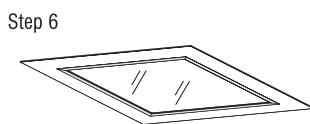
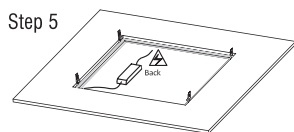
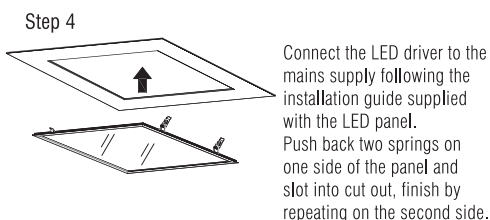
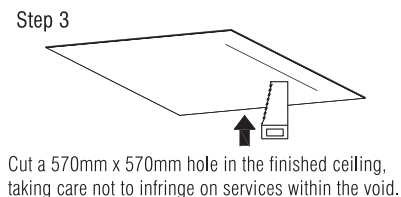
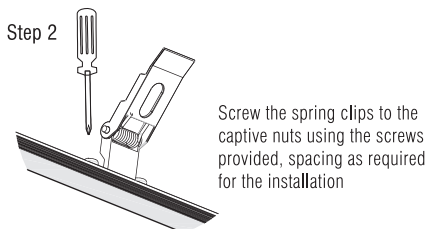
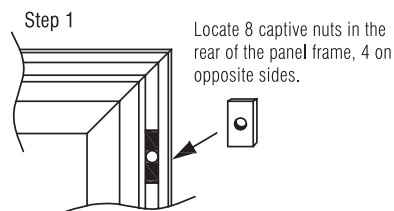
Thank you for purchasing this accessory. Please read the instructions carefully before use to ensure safe and satisfactory operation of this product. Please retain these instructions for future reference.

Installation

This recess clip is designed only for use with **Sirio panel** and **Stratus panel**. Read these instructions before commencing installation & retain them for future reference.

- Note that the switch is turned off before installation.
- There are two kinds of the screws supplied in the bag:
 - size : Ø4 x 8mm is suitable for **Sirio panel**;
 - size : Ø3 x 6mm is suitable for **Stratus panel**.
- One set accessory required for size is 595mmx 595mm panels.
- Two set accessories (6pcs) required for length 1195mm panels.

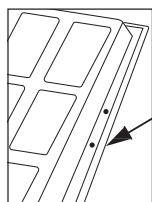
Installation diagram for Sirio panel



Turn on the power and test the LED panel

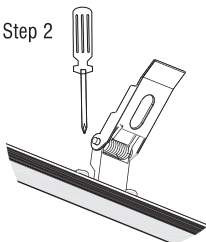
Installation diagram for Stratus panel

Step 1



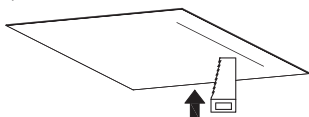
Take off screws from the back

Step 2



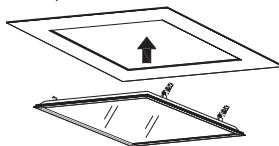
Screw the spring clips to the right position using the new screws offered

Step 3



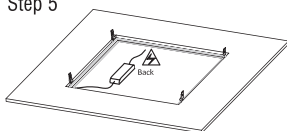
Cut a 570mm x 570mm hole in the finished ceiling, taking care not to infringe on services within the void.

Step 4



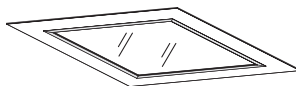
Connect the LED driver to the mains supply following the installation guide supplied with the LED panel. Push back two springs on one side of the panel and slot into cut out, finish by repeating on the second side.

Step 5



The LED driver can sit on the rear of the panel once installed.

Step 6



Turn on the power and test the LED panel

Recycling advice



Waste electrical products should not be disposed of with household waste. Please recycle where facilities exist. Check with your Local Authority or local store for recycling advice.

Safety information

For your safety, always switch off the power supply before cleaning.