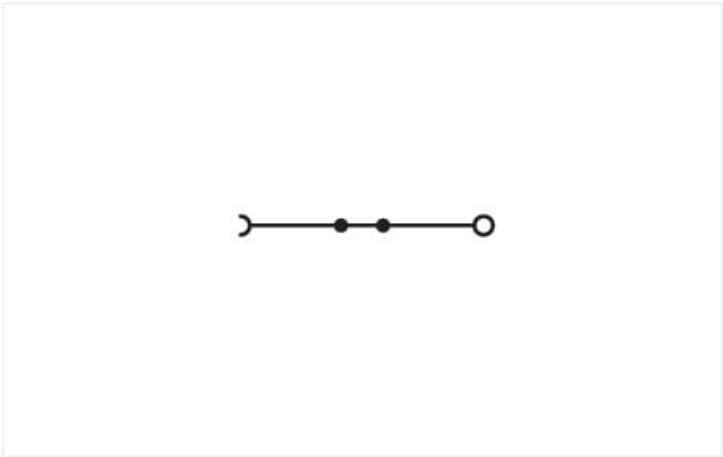
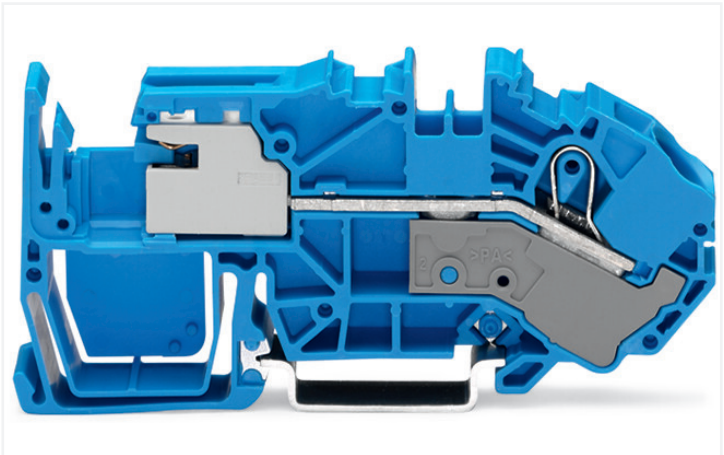


Color: ■ blue



Similar to illustration

Electrical data				
Ratings per		IEC/EN 60947-7-1		
Overvoltage category	III	III	II	
Pollution degree	3	2	2	
Nominal voltage	250 V	-	-	
Rated surge voltage	4 kV	-	-	
Rated current	73 A	-	-	
Current at conductor cross-section (max.) mm²	82 A	-	-	
Power Loss				
Power loss, per pole (potential)		2.2382 W		
Rated current I _N for specified power loss		73 A		
Resistance value for specified, current-dependent power loss		0.00042 Ω		
Connection data				
Connection points		1		
Total number of potentials		1		
Number of levels		1		
Number of jumper slots		2		
Connection 1				
Connection technology		Push-in CAGE CLAMP®		
Actuation type		Operating tool		
Connectable conductor materials		Copper		
Nominal cross-section		16 mm²		
Solid conductor		0.5 ... 16 mm² / 20 ... 6 AWG		
Solid conductor; push-in termination		6 ... 16 mm² / 14 ... 6 AWG		
Fine-stranded conductor		0.5 ... 25 mm² / 20 ... 4 AWG		

Connection 1

Fine-stranded conductor; with insulated ferrule	0.5 ... 16 mm ² / 20 ... 6 AWG
Fine-stranded conductor; with ferrule; push-in termination	6 ... 16 mm ² / 10 ... 6 AWG
Note (conductor cross-section)	Depending on the conductor characteristic, a conductor with a smaller cross-section can also be inserted via push-in termination.
Strip length	18 ... 20 mm / 0.71 ... 0.79 inches
Wiring direction	Front-entry wiring

Physical data

Width	12 mm / 0.472 inches
Height	99.7 mm / 3.925 inches
Depth from upper-edge of DIN-rail	40.8 mm / 1.606 inches

Mechanical data

Mounting type	DIN-35 rail
Marking level	Center/side marking

Material data

Note (material data)	Information on material specifications can be found here
Color	blue
Material group	I
Insulation material	Polyamide (PA66)
Flammability class per UL94	V0
Fire load	0.644 MJ
Weight	34.1 g

Environmental requirements

Processing temperature	-35 ... +85 °C
Continuous operating temperature	-60 ... +105 °C

Commercial data

Product Group	22 (TOPJOB S)
eCl@ss 10.0	27-14-11-38
eCl@ss 9.0	27-14-11-38
ETIM 8.0	EC001257
ETIM 7.0	EC001257
PU (SPU)	20 pcs
Packaging type	Box
Country of origin	PL
GTIN	4045454685300
Customs tariff number	85365080900

Environmental Product Compliance	
RoHS Compliance Status	Compliant, No Exemption

Approvals / Certificates

General approvals		Declarations of conformity and manufacturer's declarations
Approval	Standard	Certificate Name
CCA DEKRA Certification B.V.	EN 60947	NTR NL-7881
KEMA/KEUR DEKRA Certification B.V.	EN 60947	71-119271
Approval	Standard	Certificate Name
EU-Declaration of Confor- mity WAGO GmbH & Co. KG	-	-
UK-Declaration of Confor- mity WAGO GmbH & Co. KG	-	-

Approvals for marine applications

Approval	Standard	Certificate Name
ABS American Bureau of Ship- ping	-	20-HG1941090-PDA
DNV GL Det Norske Veritas, Ger- manischer Lloyd	-	TAE00001V2

Installation Notes

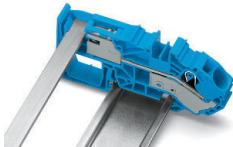
Conductor termination



All conductor types at a glance

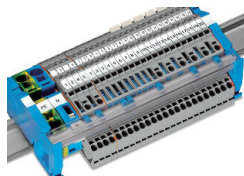


Inserting separator plate removed from N-disconnect terminal block.



Touch-proof N-busbar via inserted separator plate

Busbar



Mounting busbars on busbar carriers: Insert busbar ends onto large busbar carriers (2009-305) or onto supply terminal blocks with an integrated busbar carrier.

The busbar transparent cover (Item No. 777-303) protects the busbar against accidental contact and makes it easy to see which terminal blocks are connected to the busbar.