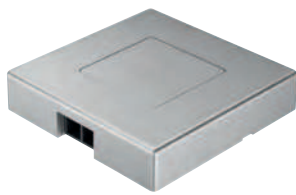


Loox dimmer modular, surface mounted - soft on/off switching and dimming

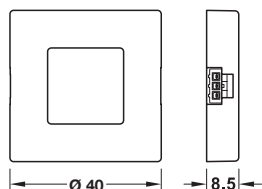
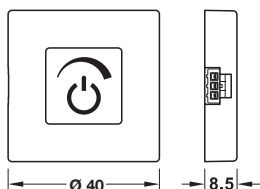


With touch function



Touchless

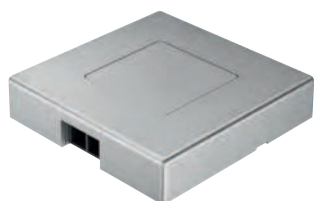
- > Dim. (L x W x H): 40 x 40 x 8.5 mm
- > Sensor range: 0-100 mm. Power consumption ≤ 0.3 W
- > Silver coloured plastic
- > Order qty: 1 pc



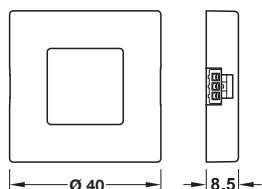
Dimming value is stored without the need for power supply (memory function)

| | Sensor range | Cat. No. |
|------------|--------------|------------|
| With touch | - | 833.89.134 |
| Touchless | 0-80 mm | 833.89.135 |

Loox door sensor switch modular, surface mounted - soft on/off switching and dimming

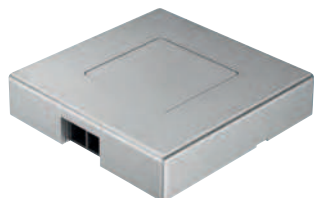


- > Dim. (L x W x H): 40 x 40 x 8.5 mm
- > Sensor range: 0-100 mm. Power consumption ≤ 0.3 W
- > Plastic
- > Order qty: 1 pc

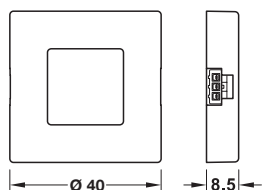


| Finish | Cat. No. |
|-----------------|------------|
| Silver coloured | 833.89.137 |

Loox sensor switch modular, surface mounted - touchless soft on/off switching



- > Dim. (L x W x H): 40 x 40 x 8.5 mm
- > Sensor range: 0-80 mm. Power consumption ≤ 0.3 W
- > Plastic
- > Order qty: 1 pc



On/off state is stored without the need for power supply (memory function)

| Finish | Cat. No. |
|-----------------|------------|
| Silver coloured | 833.89.136 |



Please order lead with snap-in connector for modular switch to Loox driver separately, shown on page 5.83