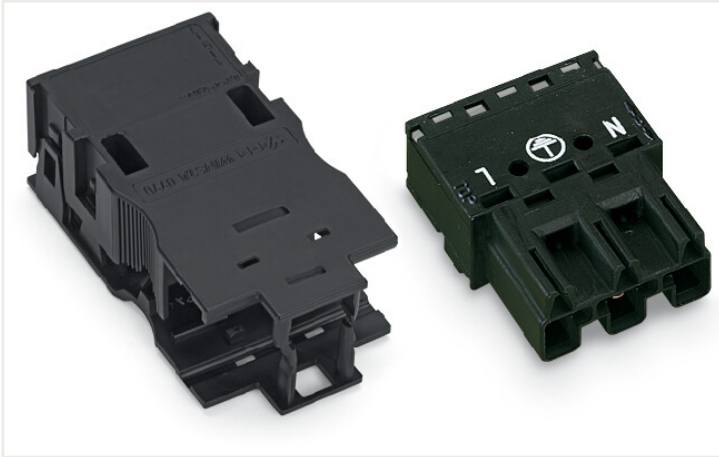


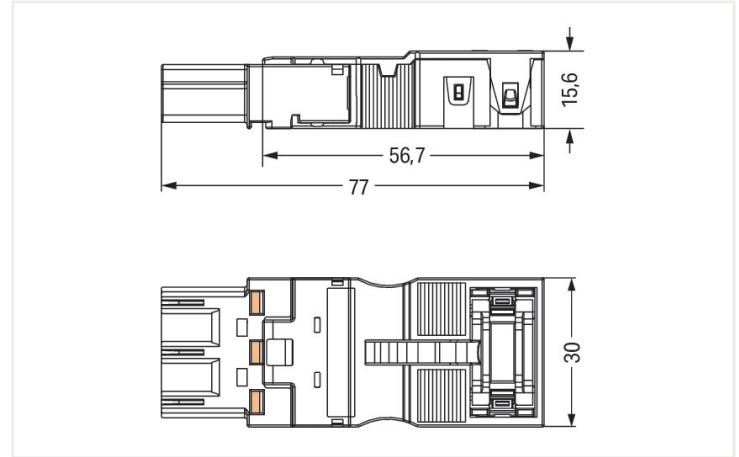
Data sheet | Item number: 770-213/035-000

Plug; with strain relief housing; 3-pole; 4,00 mm²; black

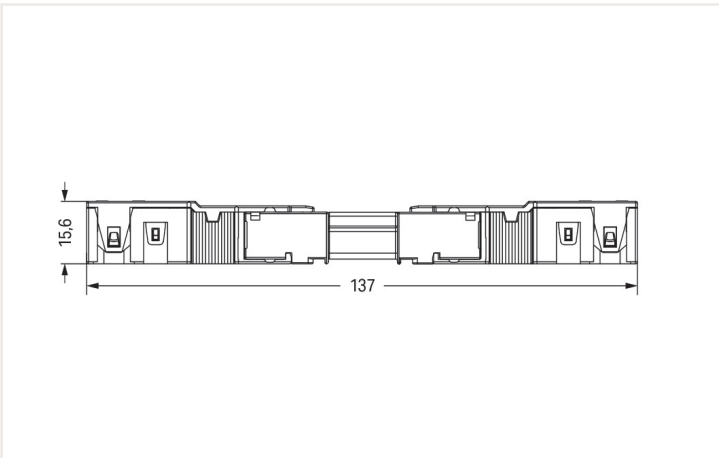
<https://www.wago.com/770-213/035-000>



Color: ■ black



Dimensions in mm



Dimensions in mm

Overall length when mated

Male connector/plug WINSTA® MIDI 3-pole

The WINSTA® MIDI male connector/plug with protection type IP2XD provides the foundation for assembly of fine-stranded and solid conductors. WAGO pluggable installation connectors are used when specifications repeat or are distributed on a specific grid, for example for installing grid lighting or flush-mount lighting. For greater protection in electrical installations, the pluggable installation connector is provided with mechanical protection against mismatching. The WINSTA® MIDI pluggable installation connector with A coding in black or white is usually used for general mains applications in power distribution. This pluggable installation connector can be used for a current load of up to 25 A. Therefore, it can also be used for high power loads. The WINSTA® MIDI Pluggable Connection System with Push-in CAGE CLAMP® spring pressure connection technology facilitates precise electrification. Due to the integrated test slot, connections can be checked even when they are plugged in. That saves time and reduces installation labor and costs. The strip length is 48 mm.

Lower costs through fast commissioning and elimination of service expenses – solutions from WINSTA® MIDI

WINSTA® is the pluggable connection system that is optimally tailored to the strict requirements of electrical installation. It allows error-free installation of cables and components, quickly and reliably. Choose durability and quality – the WINSTA® MIDI pluggable installation connector with protection against mismatching from WAGO makes the electrical installation of electrical components visibly easier.

- pluggable installation connectors with protection against mismatching
- pre-assembled versions
- with A coding for use in a large number of general mains applications
- ready for immediate use
- quick replacement of defective units during ongoing operation

Item includes



Item no.: 770-213

1

Item no.: 770-503/035-000

1

Plug; 3-pole; 4,00 mm²; black

Strain relief housing; 3-pole; with locking clip; for 1 cable; 7.0 ... 11.5 mm; 48 mm; black

Electrical data

Ratings per IEC/EN

Ratings per	IEC/EN 60664-1
Nominal voltage (III/3)	250 V
Rated impulse voltage (III/3)	4 kV
Rated current	25 A
Legend (ratings)	(III / 3) △ Overvoltage category III / Pollution degree 3

Ratings per UL

Note for the US market	Some versions may also be used for current interruption in accordance with the UL certificate in select applications with currents below 16 A and voltages up to 600 V. For further information, please contact your local sales office.
Rated voltage (UL 1977)	600 V
Rated current UL 1977	23 A

General

Note on contact resistance	approx. 1 mΩ of contact resistance approx. 0.25 mΩ contact transition plug/socket
----------------------------	--

Connection data

Connection points	6
Total number of potentials	3
PE function	Preceding PE contact

Connection 1

Connection technology	Push-in CAGE CLAMP®
Actuation type	Operating tool Push-in
Nominal cross-section	4 mm ² / 12 AWG
Solid conductor	0.5 ... 4 mm ² / 20 ... 12 AWG
Solid conductor; push-in termination	1.5 ... 4 mm ² / 16 ... 12 AWG
Stranded conductor	0.5 ... 2.5 mm ² / 20 ... 14 AWG
Fine-stranded conductor	0.5 ... 4 mm ² / 20 ... 12 AWG
Fine-stranded conductor; with insulated ferrule	0.25 ... 1.5 mm ² / 20 ... 16 AWG
Fine-stranded conductor; with uninsulated ferrule	0.25 ... 2.5 mm ² / 20 ... 14 AWG
Fine-stranded conductor; with ferrule; push-in termination	1.5 mm ² / 16 AWG
Strip length	9 mm / 0.35 inches
Pole number	3
Connectable sheathed cable diameter	7 ... 11.5 mm
Conductor entry direction to mating direction	0°
Strip length (outer insulation)	48 mm

Physical data

Pin spacing	10 mm / 0.394 inches
Width	30 mm / 1.181 inches
Height	15.6 mm / 0.614 inches
Depth	77 mm / 3.031 inches

Mechanical Data

Application	General mains applications
Coding	A
Variable coding	Yes
Marking	N ⊕ L
Potential marking	N ⊕ L
Mating force of a plug-in connection	approx. 20 ... 70 N (depending on pole number)
Retention force of a plug-in connection	Locked:
Unmating force of a plug-in connection	Unlocked: approx. 20 ... 70 N (depending on pole number)
Number of mating cycles	200, without resistive load
Protection type	IP2XD; When mated and secured with a strain relief housing: IP2xC (These compact connectors are not designed for use in open, easily accessible areas!)
Suitable	for quick assembly

Plug-in connection

Contact type (pluggable connector)	Male connector/plug
Connector (connection type)	for conductor
Mismating protection	Yes
Note on mismating protection	All WINSTA® components are 100% protected against mismating when: a.) plugging different numbers of poles b.) plugging while rotated 180 c.) plugging while laterally staggered d.) plugging one pole
Locking lever	Can be retrofitted
Locking of plug-in connection	Locking lever
Note on locking system	All connectors for mounted installations (snap-in versions for lighting fixtures or devices, all types of PCB and distribution connectors) are factory-equipped with locking levers to ensure plugs and sockets are securely locked. Additional locking levers are only required for flying leads (plug/socket).
Strain relief	Strain relief house, for quick assembly

Material Data

Note (material data)	Information on material data can be found here
Color	black
Cover color	gray
Material group	I
Insulation material	Polyamide (PA66)
Flammability class per UL94	V0
Clamping spring material	Chrome-nickel spring steel (CrNi)
Contact material	Copper or copper alloy; surface-treated
Contact plating	Tin
Fire load	0.441 MJ
Strain relief color	black
Weight	18.1 g

Environmental requirements	
Processing temperature	-5 ... +40 °C
Continuous operating temperature	-35 ... +85 °C
Note on continuous operating temperature	Insulating parts for temperatures ≤ 105 °C

1 Compatible products

1.1 System counterpart

1.1.1 Cable assembly



Item no.: 771-9993/106-101

pre-assembled connecting cable; Eca; Socket/open-ended; 3-pole; Cod. A; H05VV-F 3G 1.5 mm²; 1 m; 1,50 mm²; black

Item no.: 771-9993/006-101

pre-assembled interconnecting cable; Eca; Socket/plug; 3-pole; Cod. A; H05VV-F 3G 1.5 mm²; 1 m; 1,50 mm²; black

1.1.2 Distribution box



Item no.: 899-631/181-000

Distribution box; 230 V + DALI; 2 inputs; 6 outputs; Cod. A, I; MINI, MIDI; black



Item no.: 899-631/405-000

Distribution box; 230 V + SMI; 2 inputs; 6 outputs; Cod. A, B; MINI, MIDI; black



Item no.: 899-631/315-000

Distribution box; Cable and device protection; 1 input; 4 outputs; Cod. A; MIDI; black



Item no.: 899-631/305-000

Distribution box; Crossover switching; 1 input; 5 outputs; Cod. A, B, S; MIDI; black



Item no.: 899-631/309-000

Distribution box; Motion/presence detector; 1 input; 3 outputs; Cod. A, S; MIDI; black



Item no.: 899-631/180-000

Distribution box; Motion/presence detector; 1 input; 5 outputs; Cod. A; MIDI; black



Item no.: 899-631/386-000

Distribution box; Series switching; 1 input; 7 outputs; Cod. A, S; MIDI; black



Item no.: 899-631/334-000

Distribution box; Single-phase current (230 V); 1 input; 13 outputs; Cod. A; MIDI; black



Item no.: 899-631/476-000

Distribution box; Single-phase current (230 V); 1 input; 4 outputs; Cod. A; MIDI



Item no.: 899-631/104-000

Distribution box; Single-phase current (230 V); 1 input; 7 outputs; Cod. A; MIDI; black



Item no.: 899-631/311-000

Distribution box; Single-phase current (230 V); 2 inputs; 6 outputs; Cod. A, P; MIDI; black



Item no.: 899-631/327-000

Distribution box; Single-phase current (230 V); 2 inputs; 6 outputs; Cod. A; MIDI; black



Item no.: 899-631/363-000

Distribution box; Single-pole switch circuit; 1 input; 5 outputs; Cod. A, S; MIDI; black



Item no.: 899-631/450-000

Distribution box; supply cable entry; 6 outputs; Cod. A; MIDI; black



Item no.: 899-632/101-000

Distribution box; Surge switch circuit; 1 input; 4 outputs; Cod. A, S; MIDI; black



Item no.: 899-632/138-000

Distribution box; Surge switch circuit; 1 input; 4 outputs; Cod. A, S; MIDI; black



Item no.: 899-631/346-000

Distribution box; Three-phase to single-phase current (400 V/230 V); 1 input; 4 outputs; Cod. A; MIDI; black



Item no.: 899-631/149-000

Distribution box; Three-phase to single-phase current (400 V/230 V); 1 input; 6 outputs; Cod. A; MIDI, MAXI; black



Item no.: 899-631/105-000

Distribution box; Three-phase to single-phase current (400 V/230 V); 1 input; 6 outputs; Cod. A; MIDI; black



Item no.: 899-631/100-000

Distribution box; Three-phase to single-phase current (400 V/230 V); 1 input; 7 outputs; Cod. A; MIDI; black



Item no.: 899-631/302-000

Distribution box; Three-phase to single-phase current (400 V/230 V); 2 inputs; 6 outputs; Cod. A, P; MIDI; black



Item no.: 899-631/338-000

Distribution box; Three-phase to single-phase current (400 V/230 V); supply cable entry; 1 input; 6 outputs; Cod. A; MIDI; black



Item no.: 899-631/308-000

Distribution box; Two-way circuit; 1 input; 5 outputs; Cod. A, S; MIDI; black



Item no.: 899-631/189-000

Distribution box; Two-way circuit; 1 input; 7 outputs; Cod. A, S; MIDI; black

1.1.3 Distribution connector



Item no.: 770-607

3-way distribution connector; 3-pole; Cod. A; 1 input; 3 outputs; black



Item no.: 770-608

5-way distribution connector; 3-pole; Cod. A; 1 input; 5 outputs; outputs on both sides; black



Item no.: 770-638

Distribution connector for switches; Single-pole and throttle two-way circuit; 3-pole; Cod. A/S; 1 input; 5 outputs; black



Item no.: 770-637

Distribution connector for switches; Single-pole switch and series circuit; 3-pole; Cod. A/S; 1 input; 5 outputs; black



Item no.: 770-633

h-distribution connector; 3-pole; Cod. A; 1 input; 2 outputs; 2 locking levers; black



Item no.: 770-635

h-distribution connector; 3-pole; Cod. A; 1 input; 2 outputs; outputs on both sides; 3 locking levers; for flying leads; black



Item no.: 770-634

h-distribution connector; 3-pole; Cod. A; 1 input; 2 outputs; outputs on one side; 2 locking levers; black



Item no.: 770-636

h-distribution connector; 3-pole; Cod. A; 1 input; 2 outputs; outputs on one side; 3 locking levers; for flying leads; black



Item no.: 770-606

T-distribution connector; 3-pole; Cod. A; 1 input; 2 outputs; 2 locking levers; black



Item no.: 770-615

T-distribution connector; 3-pole; Cod. A; 1 input; 2 outputs; 3 locking levers; for flying leads; black



Item no.: 770-611

Three-phase to single-phase distribution connector; with phase selection; 5-pole/3-pole; Cod. A; 1 input; 2 outputs; with cable connection on the input side; black



Item no.: 770-640

Three-phase to single-phase distribution connector; with phase selection; 5-pole/3-pole; Cod. A; 1 input; 5 outputs; black

1.1.4 Female connector/socket



Item no.: 770-703

Snap-in socket; 3-pole; Cod. A; 4,00 mm²; black



Item no.: 770-703/009-000

Snap-in socket; with protruding mating face; 3-pole; Cod. A; 4,00 mm²; black



Item no.: 770-803/011-000

Socket for PCBs; angled; 3-pole; Cod. A; black



Item no.: 770-803

Socket for PCBs; straight; 3-pole; Cod. A; black



Item no.: 770-203

Socket; 3-pole; Cod. A; 4,00 mm²; black



Item no.: 770-103

Socket; with strain relief housing; 3-pole; Cod. A; 4,00 mm²; black



Item no.: 770-203/035-000

Socket; with strain relief housing; 3-pole; Cod. A; 4,00 mm²; black

1.1.5 Tap-off module



Item no.: 772-263

Tap-off module; for flat cable; 5 x 2.5 mm² + 2 x 1.5 mm²; 3-pole; Cod. A; with cable connection on the output side; black

1.2 Required accessories

1.2.1 Locking system

1.2.1.1 Locking system



Item no.: 770-101

Locking lever; for flying leads; for manual operation; black



Item no.: 770-121

Locking lever; for flying leads; for manual operation; white



Item no.: 770-111

Locking lever; for flying leads; for tool operation; black



Item no.: 770-131

Locking lever; for flying leads; for tool operation; white